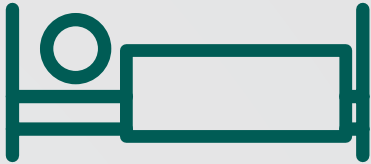


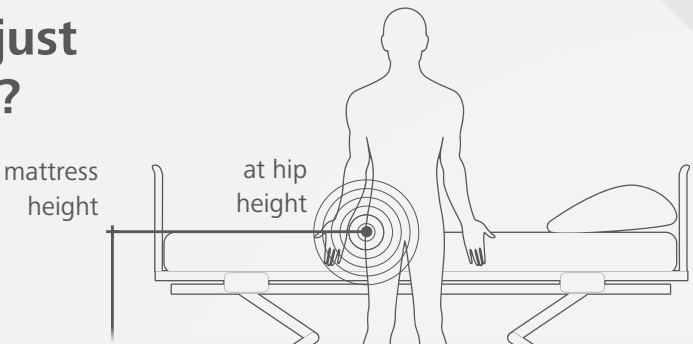
# MoliCare® Premium Elastic

Fitting guide for patients in a lying position

Patient in a lying position

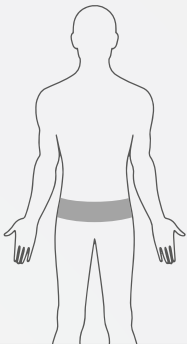


## How to adjust bed height?



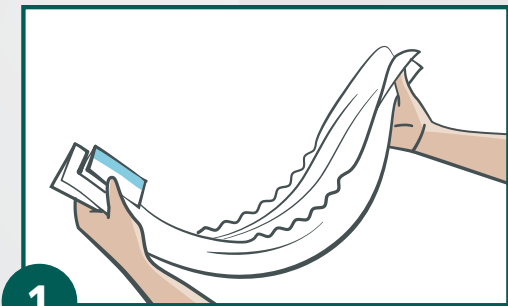
## How to select the correct size?

Using a tape measure, measure at the tip of the hip bone to select the correct size.

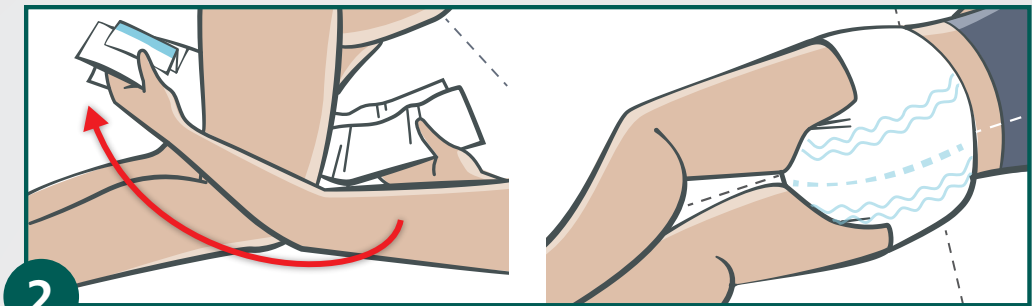


hip measurement	size
70 - 90 cm	S
85 - 120 cm	M
115 - 145 cm	L
140 - 175 cm	XL

## 4-step guide to slip fitting

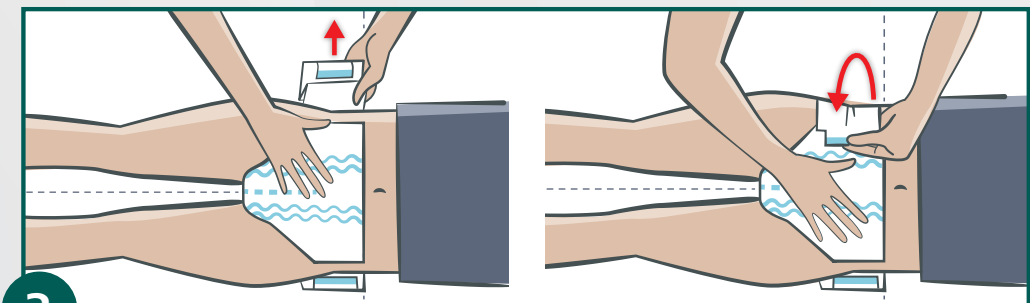


1 Fold and cup the slip to get it ready for application.



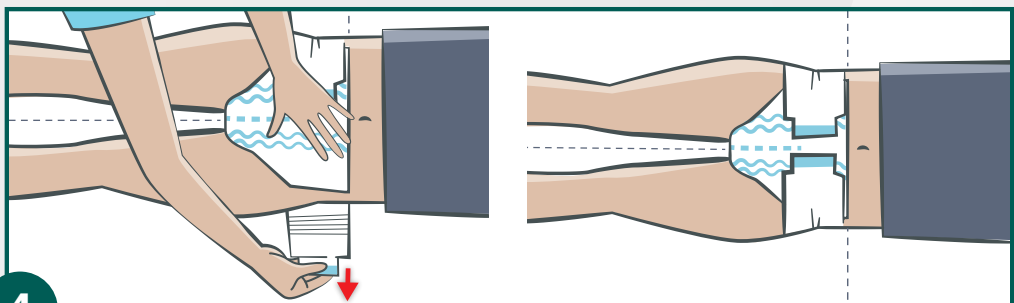
2 Turn the patient in the recovery position and slide the slip between the legs from the front to the back.

Ensure that the pad is centred in the right position by aligning the wetness indicator in line with the spine and tuck the lower side panel under the hip. Turn your patient onto their back.



3 Fold out the 1<sup>st</sup> side panel and wrap around the patient's hip.

Secure the adhesive tape into position.



4 Fold out the 2<sup>nd</sup> side panel and wrap around the patient's hip.

Secure the adhesive tape into position.

## Key benefits & principles



### Ergonomics in the workplace:

Faster application reduces handling and physical stress\*\*.

CAREGIVER



### Safety:

One turn during the application process reduces handling and ensures safety and less stress for the patient.

PATIENT

### Dignity:

Using the recovery position combined with less handling promotes a positive connection between caregiver and patient.

### Hygiene:

Removing the slip from the back ensures lower risk of faecal contamination.



[www.hartmann.com.au](http://www.hartmann.com.au)

\*Product available in 1st half of 2019. \*\*Laboratory report about ergonomic evaluation of MoliCare® variants A+B incontinence products. Research conducted between 5-8 October 2015 in Dijon, France. W. Schneider, H. Mutschler, R. Haller, C. le Mathe. Comparison with a slip having 4 side panels and 4 tapes. PAUL HARTMANN Pty Ltd. ABN 35 000 099 589. Level 5, 1 Thomas Holt Drive Macquarie Park NSW 2113. PO Box 943 North Ryde BC NSW 1670 ® Registered trademark PAUL HARTMANN AG. 9166449 / April 2019

